

UNIVERSAL CONSTANT FORCE BALANCES



PATENTED 1/2" INTERLOCKING SPRING AND CARRIER SYSTEM

- Easily mounted in window jamb
- Minimal SKUs needed
- Never needs adjusting
- Smooth reliable operation
- AAMA 902 certified
- Interlocking pivot bar
- Holds up to 80 lbs.

Patents: 5,232,208 5,365,638 6,393,661 6,412,144
Canada 2,068,391 2,361,261 2,341,997 2,369,818
Patents pending: 10/012,671 09/973,384
Canada 2,125,134 2,363,801



 **AMESBURY**
HARDWARE PRODUCTS
*Reliable Resource.
Superior Solutions.*

AMESBURY HARDWARE
2061 Sherrill Drive
Statesville, NC 28625
1-888-924-7694 Toll Free
704-924-8586 Phone
www.amesbury.com



UNIVERSAL0312

DETAILS

OMEGA BALANCE INSTALLATION DETAILS FOR UNIVERSAL SYSTEM

For Double and Single Hung Windows

Each spring is 1/2" wide with a maximum travel of 35", each support has a closed top which will eliminate a majority of the dust and debris which could fall onto the springs.

Approximate spring poundage: 3.5lb, 4.5lb, 5.5lb, 6.5lb, 7.5lb, 9lb and 10lb.

Prepare balance assemblies as required.

Top sash assemblies (double hung)
Locate above the top of the meeting rail in the exterior track.

Bottom sash assemblies (double and single hung)
Locate below the top of the meeting rail in the interior track.

Final assembly location will relate to the maximum travel of the springs (35"), please refer to the technical information sheets.

Assemblies should be installed with #8 pan head screw, **do not over tighten the screws** as this could result in damage to the profile walls.

System designed to work in a 1.292" x .562" pocket.

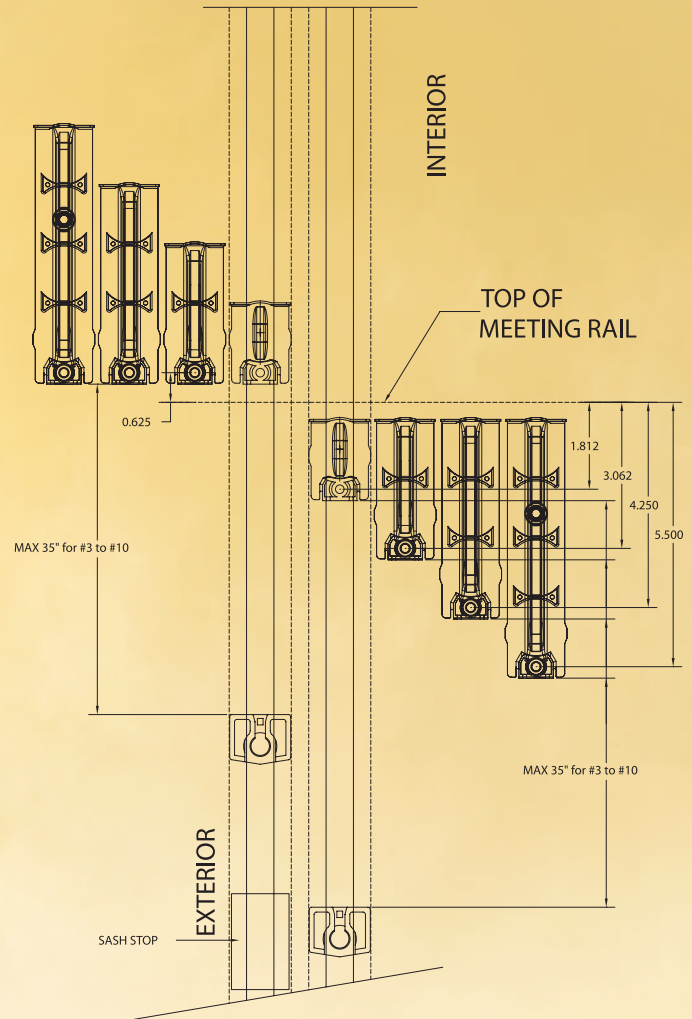
IMPORTANT:

TOP SASH

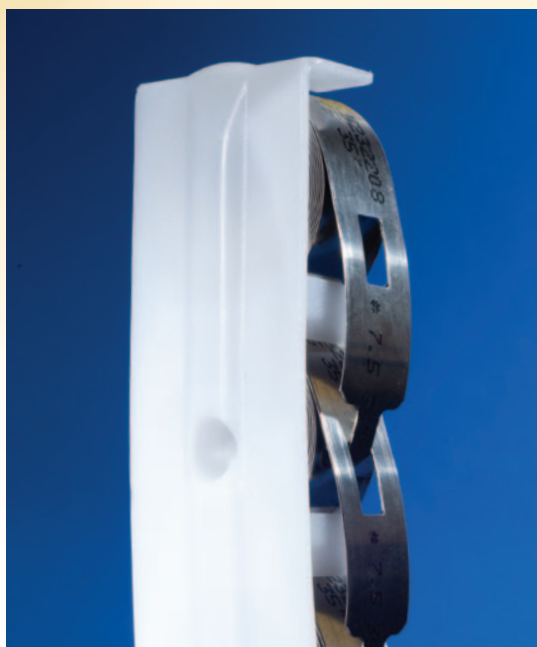
The sash travel is limited to 35". If the travel exceeds this a sash stop must be provided to limit the opening.

BOTTOM SASH

Modify the location of the support so the travel will not exceed 35". Sash stop must be provided to limit the opening.



The information contained in this drawing is the property of **AMESBURY HARDWARE PRODUCTS** and is confidential and proprietary to the company. This drawing is not to be copied or reproduced in whole or in part without the express written permission of the company. The information contained in this drawing is to be used solely for the benefit of Amesbury and is not to be disclosed or used in the performance of services or manufacture of goods for any other party with the written permission of Amesbury.



*Reliable Resource.
Superior Solutions.*

AMESBURY HARDWARE

2061 Sherrill Drive
Statesville, NC 28625

1-888-924-7694 Toll Free

704-924-8586 Phone

www.amesbury.com